

# SKIL<sup>®</sup>

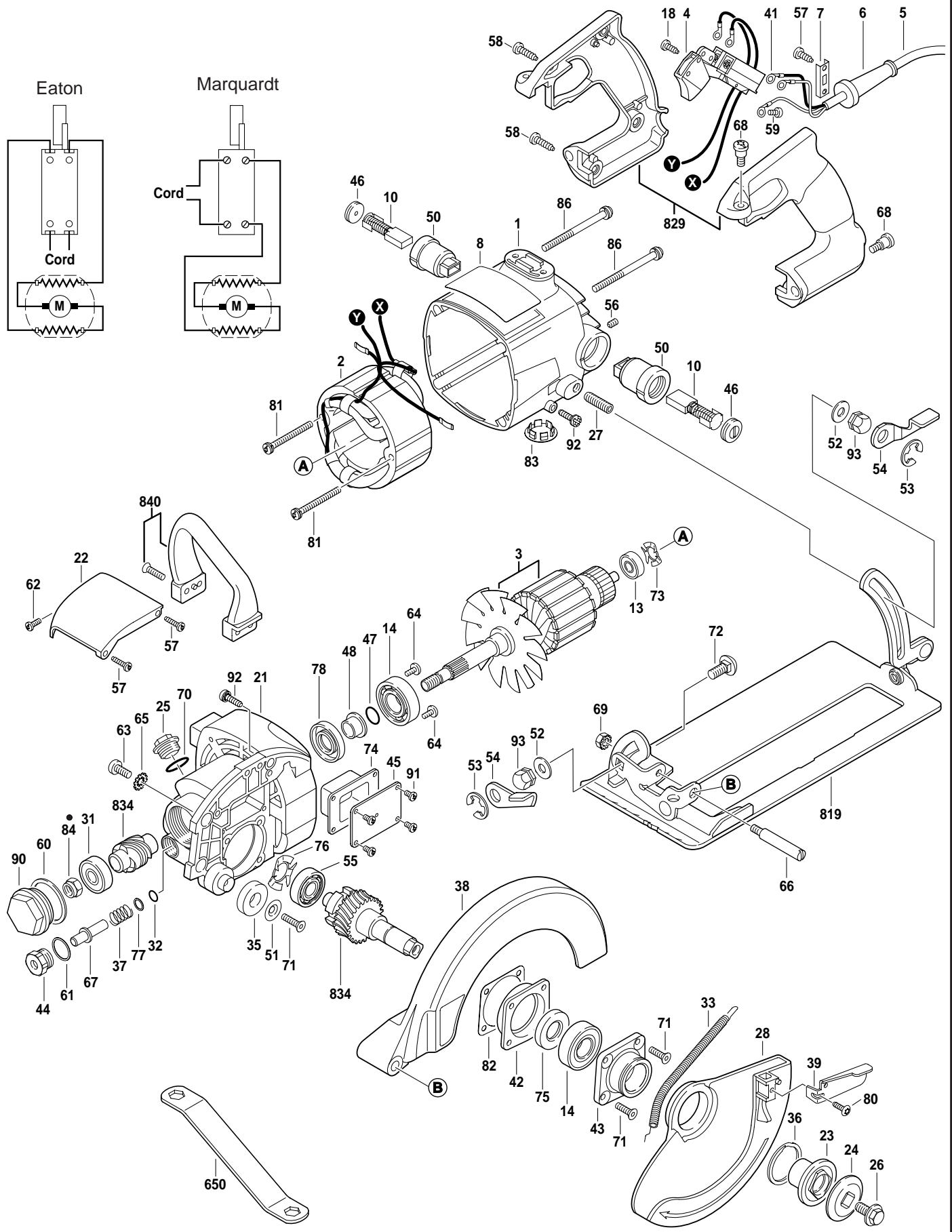
April 1999  
HEAVY DUTY

## 6-1/2" CIRCULAR SAW

### Model F01258250A

## HD5825

type 2



# HD5825 type 2 6-1/2" CIRCULAR SAW

Pos.	Part Number	Description {Qty}	F/C	Pos.	Part Number	Description {Qty}	F/C
1	2 610 352 052	Motor Housing	71	54.1	2 610 319 375	Locking Lever (Old)	64
2	2 610 329 944	Field	22	55	2 610 000 166	Ball Bearing	56
3	2 610 329 934	Armature w/Fan	AW	56	2 610 027 039	Set Screw {2}	89
4	2 610 321 608	Switch On/Off	15	57	2 610 315 299	Screw {4}	89
5	2 610 991 862	Cord 120V 16/3	11	58	2 610 315 380	Screw {4}	89
6	2 610 005 970	Strain Relief	11	59	2 610 320 173	Screw	89
7	2 610 003 719	Cord Clamp	89	60	2 610 023 331	Washer	65
8	2 610 994 097	Nameplate "HD5825"	9	61	2 610 025 067	Washer	65
10	2 610 320 391	Brush {2}	26	62	2 610 329 929	Screw	89
13	2 610 017 348	Ball Bearing	6	63	2 610 329 955	Screw {2}	89
14	2 610 024 748	Ball Bearing {2}	60	64	2 610 341 365	Screw {3}	89
18	2 610 901 971	Screw	89	65	2 610 306 355	Lock Washer {2}	65
21	2 610 352 057	Gear Housing	33	66	2 610 319 932	Hinge Pin	66
22	2 610 303 855	Hood	70	67	2 610 325 655	Locking Pin	81
23	2 610 352 116	Inner Flange	91	68	2 610 353 799	Screw {4}	89
24	2 610 902 905	Outer Flange	91	69	2 610 356 026	Lock Nut	89
25	2 610 023 384	Oil Plug	9	70	2 610 044 639	O-Ring	78
26	2 610 000 050	Blade Bolt	85	71	2 610 027 002	Screw {5}	89
27	2 610 315 286	Stud	89	72	2 610 016 325	Bolt	89
28	2 610 352 111	Lower Guard	92	73	2 610 004 459	Spring	27
31	2 610 017 875	Ball Bearing	60	74	2 610 023 335	Expansion Chamber	79
32	2 610 015 726	O-Ring	78	75	2 610 025 245	Oil Seal	77
33	2 610 352 138	Spring	27	76	2 610 004 521	Spring Washer	65
35	2 610 319 494	Rubber Stop	9	77	2 610 017 016	Washer	65
36	2 610 341 359	Retaining Ring	89	78	2 610 329 927	Oil Seal	77
37	2 610 023 394	Spring	27	80	2 610 328 924	Screw	89
38	2 610 352 105	Upper Guard	72	81	2 610 329 951	Screw {2}	89
39	2 610 352 085	Lift Lever	9	82	2 610 023 334	Gasket	79
41	2 610 316 596	Terminal {3}	10	83	2 610 350 005	Plug	9
42	2 610 352 115	Retaining Plate	65	84	2 610 318 324	Nut	89
43	2 610 352 091	Guard Plate	92	86	2 610 329 953	Screw {4}	89
44	2 610 023 324	Bushing	66	87	2 610 069 183	Spring Washer (Old)	27
45	2 610 023 336	Cover Plate	70	90	2 610 325 089	Bearing Cover	70
46	3 603 463 500	Brush Cap {2}	25	91	2 610 353 289	Screw {4}	89
47	2 610 044 638	O-Ring	78	92	2 610 352 140	Screw {2}	89
48	2 610 023 330	Collar	77	93	2 610 968 746	Nut {2}	89
50	2 610 329 940	Brush Holder {2}	25	93.1	2 610 318 265	Nut {2} (Old)	89
51	2 610 004 341	Washer	65	650	2 610 000 266	Wrench	9
52	2 610 009 722	Washer {2}	65	819	2 610 352 079	Foot Plate Assembly	88
53	2 610 968 747	Retaining Ring {2}	89	829	2 610 902 881	Handle Assembly	74
53.1	2 610 302 855	Retaining Ring {4} (Old)	89	834	2 610 357 524	Gear/Shaft Assembly	32
54	2 610 968 745	Locking Lever {2}	64	840	2 610 990 138	Top Handle Assembly	74

## Service Notes:

1. • Pos. 84: Torque nut to 100 in/lbs. then back off 1/4 turn.

2. If your tool has position 87 Spring Washer, you may use the "old" part numbers for repairs. Old parts and new parts are not interchangeable. You may update older tools by using **ALL** of the "new" parts together.

