

SKIL[®]

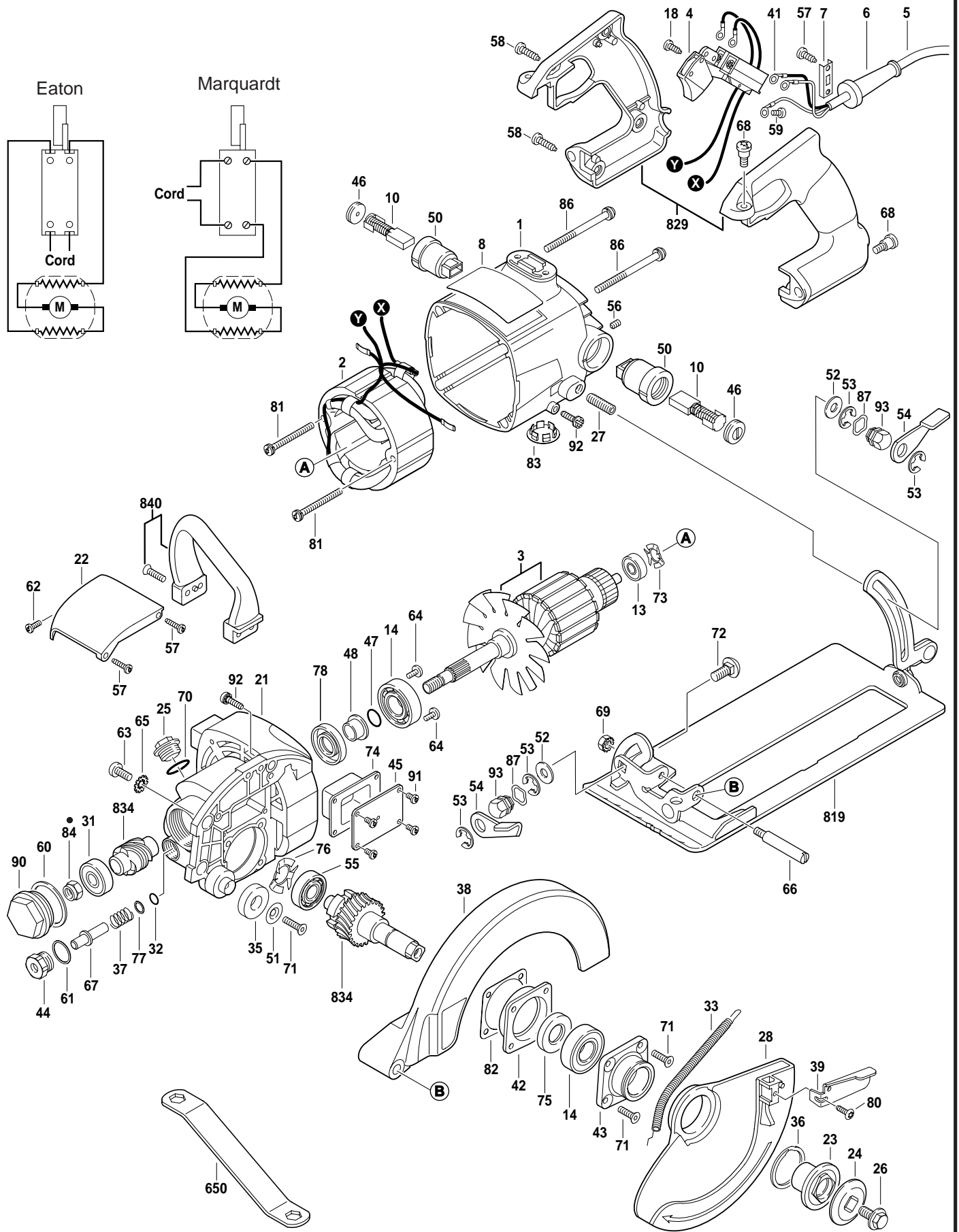
April 1999
HEAVY DUTY

8-1/4" CIRCULAR SAW

Model F01258600A

HD5860

type 2



HD5860 type 2 8-1/4" CIRCULAR SAW

Pos.	Part Number	Description {Qty}	F/C	Pos.	Part Number	Description {Qty}	F/C
1	2 610 352 053	Motor Housing	71	55	2 610 000 166	Ball Bearing	56
2	2 610 329 947	Field	22	56	2 610 027 039	Set Screw {2}	89
3	2 610 329 937	Armature w/Fan	AW	57	2 610 315 299	Screw {4}	89
4	2 610 321 608	Switch On/Off	15	58	2 610 315 380	Screw {4}	89
5	2 610 991 862	Cord 120V 16/3	11	59	2 610 320 173	Screw	89
6	2 610 005 970	Strain Relief	11	60	2 610 023 331	Washer	65
7	2 610 003 719	Cord Clamp	89	61	2 610 025 067	Washer	65
8	2 610 994 098	Nameplate "HD5860"	9	62	2 610 329 929	Screw	89
10	2 610 320 391	Brush {2}	26	63	2 610 329 955	Screw {2}	89
13	2 610 017 348	Ball Bearing	6	64	2 610 341 365	Screw {3}	89
14	2 610 024 748	Ball Bearing {2}	60	65	2 610 306 355	Lock Washer {2}	65
18	2 610 901 971	Screw	89	66	2 610 319 932	Hinge Pin	66
21	2 610 352 057	Gear Housing	33	67	2 610 325 655	Locking Pin	81
22	2 610 303 855	Hood	70	68	2 610 353 799	Screw {4}	89
23	2 610 352 118	Inner Flange	91	69	2 610 356 026	Lock Nut	89
24	2 610 901 964	Outer Flange	91	70	2 610 044 639	O-Ring	78
25	2 610 023 384	Oil Plug	9	71	2 610 027 002	Screw {5}	89
26	2 610 352 088	Blade Bolt	85	72	2 610 016 325	Bolt	89
27	2 610 315 286	Stud	89	73	2 610 004 459	Spring	27
28	2 610 352 113	Lower Guard	92	74	2 610 023 335	Expansion Chamber	79
31	2 610 017 875	Ball Bearing	60	75	2 610 025 245	Oil Seal	77
32	2 610 015 726	O-Ring	78	76	2 610 004 521	Spring Washer	65
33	2 610 993 546	Spring	27	77	2 610 017 016	Washer	65
35	2 610 319 494	Rubber Stop	9	78	2 610 329 927	Oil Seal	77
36	2 610 341 359	Retaining Ring	89	80	2 610 328 924	Screw	89
37	2 610 023 394	Spring	27	81	2 610 329 952	Screw {2}	89
38	2 610 352 104	Upper Guard	72	82	2 610 023 334	Gasket	79
39	2 610 352 085	Lift Lever	9	83	2 610 350 005	Plug	9
41	2 610 316 596	Terminal {3}	10	• 84	2 610 318 324	Nut	89
42	2 610 352 115	Retaining Plate	65	86	2 610 329 954	Screw {4}	89
43	2 610 352 091	Guard Plate	92	87	2 610 069 183	Spring washer {2}	65
44	2 610 023 324	Bushing	66	90	2 610 325 089	Bearing Cover	70
45	2 610 023 336	Cover Plate	70	91	2 610 353 289	Screw {4}	89
46	3 603 463 500	Brush Cap {2}	25	92	2 610 352 140	Screw {2}	89
47	2 610 044 638	O-Ring	78	93	2 610 318 265	Nut {2}	89
48	2 610 023 330	Collar	77	650	2 610 000 266	Wrench	9
50	2 610 329 940	Brush Holder {2}	25	819	2 610 357 548	Foot Plate Assembly	88
51	2 610 004 341	Washer	65	829	2 610 902 881	Handle Assembly	74
52	2 610 009 722	Washer {2}	65	834	2 610 357 524	Gear/Shaft Assembly	32
53	2 610 302 855	Retaining Ring {4}	89	840	2 610 990 138	Top Handle Assembly	74
54	2 610 319 375	Locking Lever {2}	64				

Service Notes:

- Pos. 84: Torque nut to 100 in/lbs. then back off 1/4 turn.